


ITEM NO.	PART NUMBER	DESCRIPTION	QTY.
1	641-0105	PCB COMPLETE ENGINE CFII	12
2	430-1406-0	SCREW M3 X 6 SHCS BLK	96
3	900-2174	HIROSE BRIDGE (FLOATING PLUG) 3PIN	11
4	641-0320	REFLECTOR, CFII	24
5	641-0210	LENS CF II ASYMETRIC	6
6	641-0590	EXTRUSION CLAMP MACHINED BLACK ANODIZED	1
7	429-6110-0	SCREW SELF TAP FH PLPS BLK ST2.9x9.5 RoHS	5
8	641-0201	END PLATE GASKET 3.5"	2
9	900-0407	PLUNGER SPRING STUBBY #10-32UNFx0.468 BLACK	2
10	622-0063	FOOT PLATE CF CFII BLK QRTR TURN	2
11	641-0014	END PLATE CFII LEFT BLK	1
12	326-2138-1	FLAT WASHER, 0.260" ID Ni	4
13	450-3305-0	HEX NUT M5, NYLOCK BLK	2
14	900-0655	BEARING F626ZZ 6mm W/FLANGE	2
15	480-2112-1	FLAT WASHER, M8 TYPE L ZPL	2
16	480-2914-4	WASHER DOUBLE SPRING M8	2
17	480-2518-1	WASHER FLAT M8 TYPE M	2
18	622-0012	LEVER QUICK RELEASE	2
19	440-1216-0	SCREW M4x16 PH PLPS BLK	2
20	450-6719-0	SCREW SELF TAP RAISED CS PLPS BLK ST4.8x19	8
21	641-0015	END PLATE RIGHT BLK, CFII	1
22	306-1235-1	SCREW #6 PH PHILIPS ZINC 7/16" LENGTH	4
23	641-0110	CLOSING PLATE w/ Q logo CFII 72 BLK	1
24	435-6295-0	SCREW SELF TAP PH PLPS BLK ST3.5x9.5 RoHS	6
25	641-0441	PSU TO ENGINES 1-3/10-12	2
26	641-0442	PSU TO ENGINES 4-6/7-9	2
27	641-0470	DATA TO 1ST ENGINE FROM CTRL PCB	1

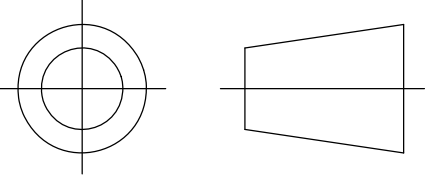


Chroma-Q  
BRIGHT SOLUTIONS

ALL INFORMATION CONTAINED IN THIS DOCUMENT IS  
PROPERTY OF CHROMA-Q AND MAY NOT BE REPRODUCED IN  
WHOLE OR PART WITHOUT PERMISSION OF CHROMA-Q

UNLESS OTHERWISE SPECIFIED ALL  
DIMENSIONS ARE IN MM [INCHES]

THIRD ANGLE PROJECTION



TITLE:  
**COLOR FORCE II - 72**

SIZE  
**A2**

PART NO.  
**641-3000**

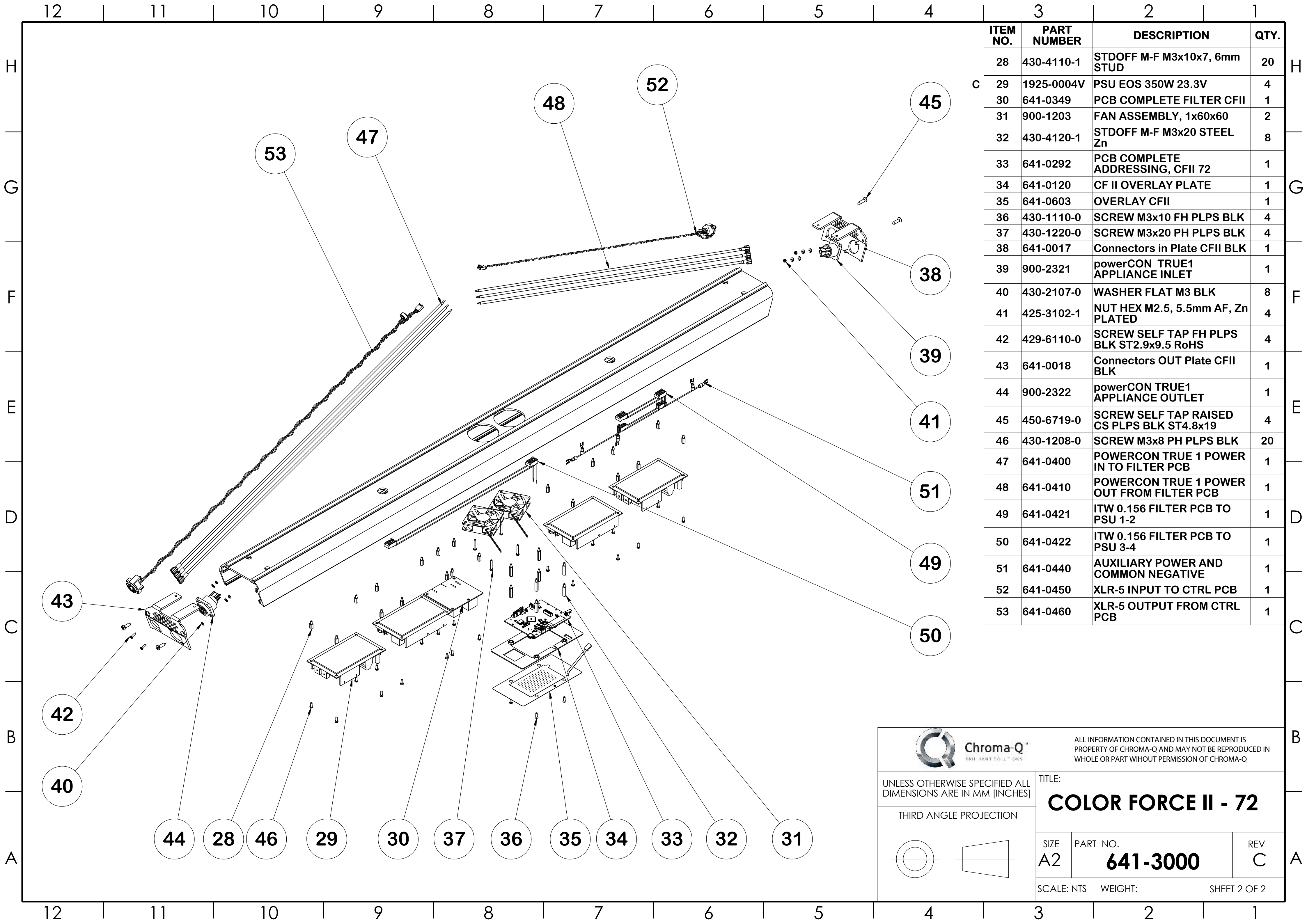
REV  
**C**

SCALE: NTS


WEIGHT:

SHEET 1 OF 2





ITEM NO.	PART NUMBER	DESCRIPTION	QTY.
28	430-4110-1	STDOFF M-F M3x10x7, 6mm STUD	20
29	1925-0004V	PSU EOS 350W 23.3V	4
30	641-0349	PCB COMPLETE FILTER CFII	1
31	900-1203	FAN ASSEMBLY, 1x60x60	2
32	430-4120-1	STDOFF M-F M3x20 STEEL Zn	8
33	641-0292	PCB COMPLETE ADDRESSING, CFII 72	1
34	641-0120	CF II OVERLAY PLATE	1
35	641-0603	OVERLAY CFII	1
36	430-1110-0	SCREW M3x10 FH PLPS BLK	4
37	430-1220-0	SCREW M3x20 PH PLPS BLK	4
38	641-0017	Connectors in Plate CFII BLK	1
39	900-2321	powerCON TRUE1 APPLIANCE INLET	1
40	430-2107-0	WASHER FLAT M3 BLK	8
41	425-3102-1	NUT HEX M2.5, 5.5mm AF, Zn PLATED	4
42	429-6110-0	SCREW SELF TAP FH PLPS BLK ST2.9x9.5 RoHS	4
43	641-0018	Connectors OUT Plate CFII BLK	1
44	900-2322	powerCON TRUE1 APPLIANCE OUTLET	1
45	450-6719-0	SCREW SELF TAP RAISED CS PLPS BLK ST4.8x19	4
46	430-1208-0	SCREW M3x8 PH PLPS BLK	20
47	641-0400	POWERCON TRUE 1 POWER IN TO FILTER PCB	1
48	641-0410	POWERCON TRUE 1 POWER OUT FROM FILTER PCB	1
49	641-0421	ITW 0.156 FILTER PCB TO PSU 1-2	1
50	641-0422	ITW 0.156 FILTER PCB TO PSU 3-4	1
51	641-0440	AUXILIARY POWER AND COMMON NEGATIVE	1
52	641-0450	XLR-5 INPUT TO CTRL PCB	1
53	641-0460	XLR-5 OUTPUT FROM CTRL PCB	1

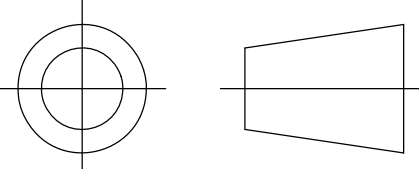


Chroma-Q  
BUILT FOR SOLID STATE

ALL INFORMATION CONTAINED IN THIS DOCUMENT IS  
PROPERTY OF CHROMA-Q AND MAY NOT BE REPRODUCED IN  
WHOLE OR PART WITHOUT PERMISSION OF CHROMA-Q

UNLESS OTHERWISE SPECIFIED ALL  
DIMENSIONS ARE IN MM [INCHES]

THIRD ANGLE PROJECTION



TITLE:  
**COLOR FORCE II - 72**

SIZE  
**A2**

PART NO.  
**641-3000**

REV  
**C**

SCALE: NTS

WEIGHT:

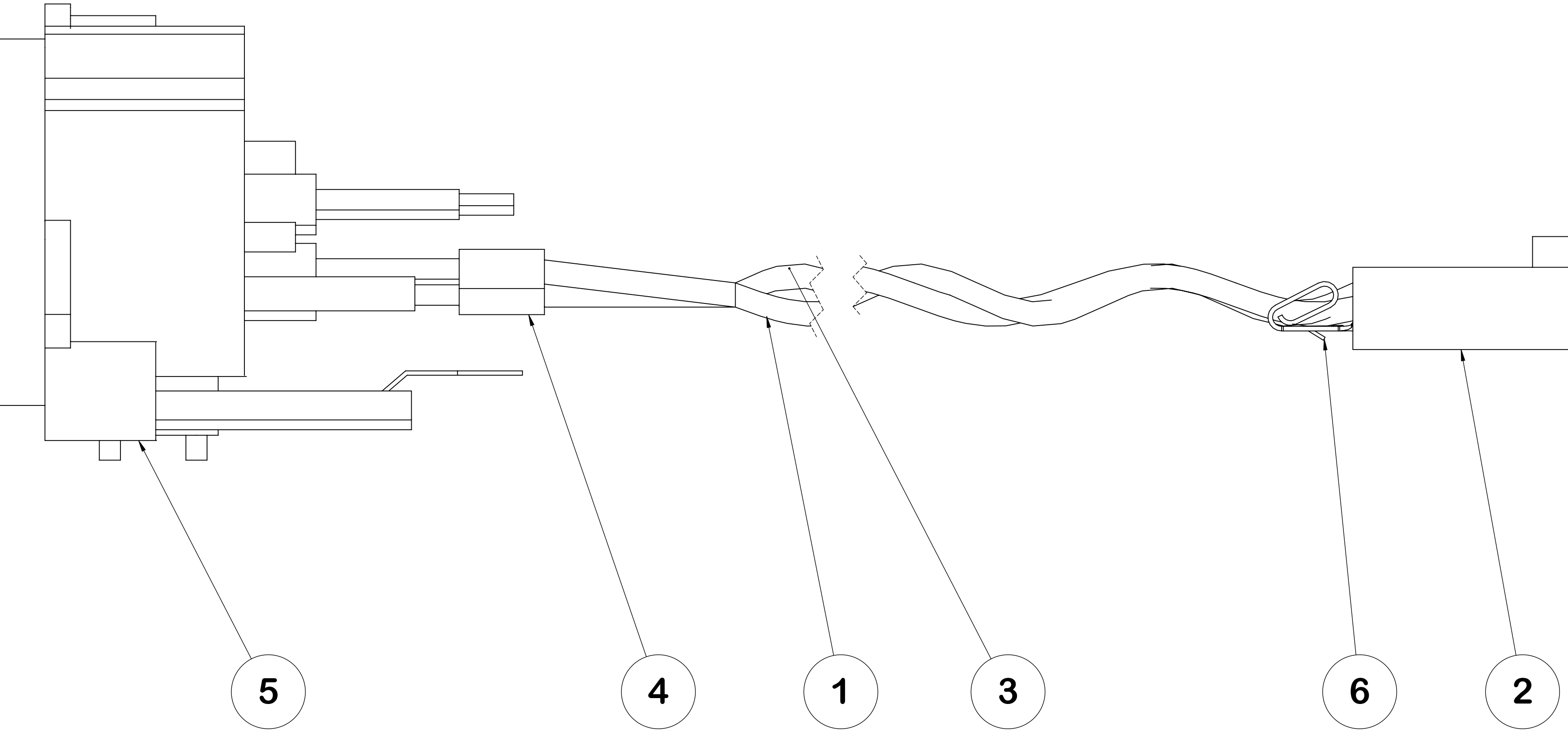
SHEET 2 OF 2

121110987654321

COLOR FORCE II- 72

641-0450

ITEM NO.	PART NUMBER	DESCRIPTION	QTY.
1	810-0011	22 AWG BLACK STRANDED TR64	1
2	900-2065	MOLEX 3 PIN HOUSING	1
3	810-0038	22 AWG RED STRANDED TR64	1
4	900-5115	SHRINK TUBE 1/8"IDx3/8" BLACK	2
5	900-0931	XLR-5 MC PCB-V (CC)	1
6	900-2078	MOLEX CRIMP TERMINAL ON REEL 22-30AWG	2



# COLOR FORCE II - 72

641-0460

ITEM NO.	PART NUMBER	DESCRIPTION	QTY.
1	810-0011	22 AWG BLACK STRANDED	1
2	810-0040	22 AWG GREEN STRANDED	1
3	900-2065	MOLEX 3 PIN HOUSING	1
4	810-0038	22 AWG RED STRANDED	1
5	900-0930	XLR-5 FC PCB-V	1
6	900-5115	SHRINK TUBE 1/8"IDx3/8" BLACK	3
7	900-2090	FERRITE TUBULAR BEAD	1
8	900-2078	MOLEX CRIMP TERMINAL ON REEL 22-30AWG	3

